

Course Schedule 2012

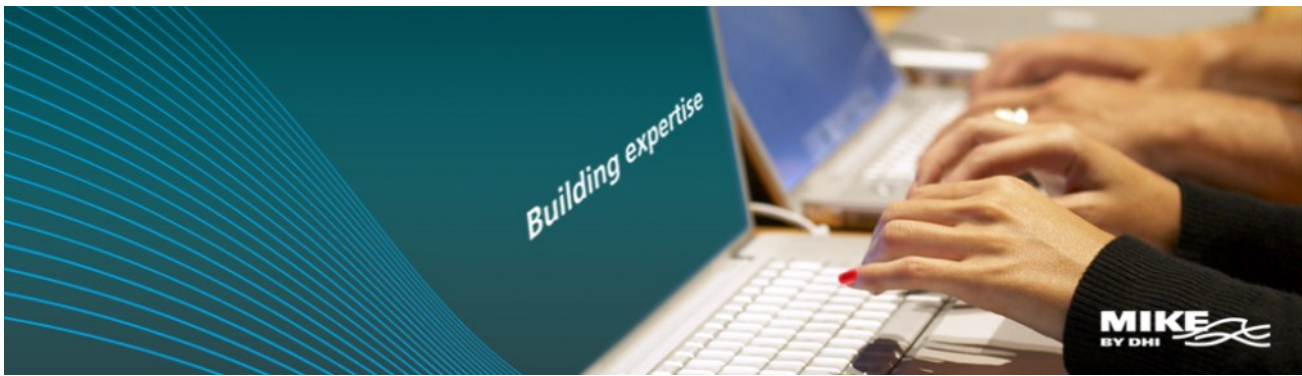
Denmark



We help build your expertise

Cities
Flooding
Coast & sea
Water resources
Groundwater & porous media

MIKE
BY DHI 



MIKE by DHI training courses

DHI believes that the best way to ensure the success of our products is to ensure the success of our clients. One of the ways we do this is through our training courses.

Our courses are held by our offices and technical support services worldwide. In your language and in your region! All our trainers are certified by DHI.

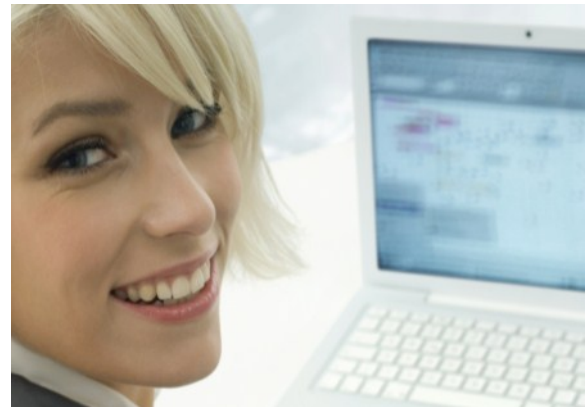
Our participants represent governmental agencies, regional and local water bodies, research institutions and universities, professional bodies and engineering companies, urban water utilities, coastal and harbour authorities.

Our course topics cover the areas of water resources, coasts and seas, cities, flooding and groundwater. Should the training course of your interest not be on the list, please feel free to contact us so that we can arrange for future courses or do a one-to-one course at your office.

Our short standard courses are designed to introduce you to the application of our various products and modules. Relevant participants for these courses include both new and potential users as well as current users who need an update to our products in a guided way. Our short courses are modular and allow you to build your expertise so as to match the requirements of your job.

Our tailored courses within client organisations range from short, dedicated courses in selected topics to longer courses, in which you - with support from relevant DHI experts - are guided through practical applications using your own data.

Courses can take place at your premises!



Venue and location

Our public enrolment courses are held at DHI Head Office in Hørsholm, Denmark.

Language

In general, our courses are held in English but a number of them can also be held in Danish or other languages. Please contact us concerning your preference of language. All training material is provided in English.

Our standard course prices

1 day: € 530 / DKK 3,900
2 days: € 1,050 / DKK 7,800
3 days: € 1,330 / DKK 9,900

(consecutive days only)

All prices are exclusive of 25% VAT.

Course fees include training material, training certificates, lunch and refreshments.

Discounts

- 10 % if valid Service Maintenance Agreement (SMA)
- 33 % for 3rd and subsequent participants

Registration

A minimum of five attendees is required for courses to proceed.

Deadline for registration

Three weeks before commencement of course. DHI reserves the right to reschedule training courses up to three weeks prior to the scheduled dates.

www.mikebydhi.com/training

COURSE SCHEDULE 2012

Denmark

	Product	Title	Dates	Location
CITIES	MIKE URBAN CS	Introduction to modelling of collection systems	21-22 February 18-19 September	DHI Head Office, Hørsholm, Denmark
	MIKE URBAN CS	Advanced tools and results presentation for modelling of collection systems	13 March 25 October	DHI Head Office, Hørsholm, Denmark
	MIKE URBAN CS	Introduction to long term statistics modelling of collection systems	14 March 23 October	DHI Head Office, Hørsholm, Denmark
	MIKE URBAN CS	Introduction to real time control modelling of collection systems	15 March 24 October	DHI Head Office, Hørsholm, Denmark
	MIKE URBAN WD	Introduction to modelling of water distribution systems	23-24 February 20-21 September	DHI Head Office, Hørsholm, Denmark
	WEST	Introduction to modelling of wastewater treatment plants	1-2 May	DHI Head Office, Hørsholm, Denmark
	WEST	Advanced modelling of wastewater treatment plants	3 May	DHI Head Office, Hørsholm, Denmark
FLOODING	MIKE FLOOD (River)	Integrated 1D and 2D river flood modelling	17-18 April 04-05 September	DHI Head Office, Hørsholm, Denmark
	MIKE FLOOD (Urban)	Integrated 1D and 2D urban flood modelling	29 Feb-01 March 09-10 October	DHI Head Office, Hørsholm, Denmark
	MIKE FLOOD (3-way)	Integrated pipes, channels and surface modelling	16-18 October	DHI Head Office, Hørsholm, Denmark
WATER RESOURCES	MIKE SHE	Integrated catchment modelling	06 - 08 March 25-27 September	DHI Head Office, Hørsholm, Denmark
	MIKE 11	Introduction to river and channel modelling	20-21 March 28-29 August	DHI Head Office, Hørsholm, Denmark
	MIKE 11 GIS	GIS based model development	22 March 30 August	DHI Head Office, Hørsholm, Denmark
	MIKE 11 ECO Lab	1D water quality and ecological modelling	27-28 June 27-28 November	DHI Head Office, Hørsholm, Denmark
	MIKE 11	Advanced hydrodynamic modelling	24-25 April 29-30 October	DHI Head Office, Hørsholm, Denmark
	MIKE BASIN	Introduction to river basin modelling	31 October- 01 November	DHI Head Office, Hørsholm, Denmark
	MIKE BASIN	Macro programming and optimisation	2 November	DHI Head Office, Hørsholm, Denmark
GW & PM	MIKE BASIN	Water quality modelling	07-08 November	DHI Head Office, Hørsholm, Denmark
COAST & SEA	FEFLOW	Groundwater modelling	14-16 May	DHI Head Office, Hørsholm, Denmark
	MIKE 21 HD	Hydrodynamic modelling using 'classic' grid	01-02 February 04-05 September	DHI Head Office, Hørsholm, Denmark
	MIKE 3 HD	Hydrodynamic modelling using 'classic' grid	07-08 February 06-07 September	DHI Head Office, Hørsholm, Denmark
	MIKE 21 BW	Wave disturbance modelling in ports	07-08 February 04-05 October	DHI Head Office, Hørsholm, Denmark
	MIKE 21 & MIKE 3 FLOW MODEL FM	Hydrodynamic modelling using Flexible Mesh	07-08 March 12-13 September	DHI Head Office, Hørsholm, Denmark
	LITPACK	Modelling long shore sediment transport and coastline evolution	22-23 May 02-03 October	DHI Head Office, Hørsholm, Denmark
	MIKE 21 & MIKE 3 ECO Lab	2D and 3D water quality and ecological modelling	14-15 June 21-23 November	DHI Head Office, Hørsholm, Denmark
	MIKE 21 SW	Spectral wave modelling	26-27 June 11-12 October	DHI Head Office, Hørsholm, Denmark

CITIES	MIKE URBAN CS Introduction to modelling of collection systems Dates 21-22 February 18-19 September	This two-day, hands-on course provides a practical introduction to hydraulic modelling of wastewater and urban drainage networks. You will learn how to set up and run MIKE URBAN CS and turn model outputs into professional presentation material. The course aims at enabling you to perform the basic functions of MIKE URBAN CS.	<ul style="list-style-type: none"> Project setup, including units, coordinate system Data organisation, import/export of external data Numerical and graphical editing and quality control Dynamic simulation of rainfall/runoff and pipe flow Result analysis and visualisation
	MIKE URBAN CS Advanced tools and results presentation for modelling of collection systems Dates 13 March 25 October	This one-day, hands-on course aims at enabling users to utilise more advanced MIKE URBAN tools and some ArcGIS tools. This course is useful for modellers to expedite modelling processes, become familiar with some of the more advanced tools and effectively visualise outputs.	<ul style="list-style-type: none"> Simplification tool Model configuration tool Climate change tool Customising tables Advanced result presentation
	MIKE URBAN CS Introduction to long term statistics modelling of collection systems Dates 14 March 23 October	The Long Term Statistics (LTS) module allows that a network with intermittent hydrological inputs can be set up for a long term simulation, covering a long, continuous historical period. This one-day, hands on course aims at providing basic understanding of the LTS concept as well as enabling the participant to set up and analyse results from LTS simulations.	<ul style="list-style-type: none"> Setting up job lists: initial conditions, generation and editing of these Run time stop criteria Running long term statistics simulations Statistical results and result analysis
	MIKE URBAN CS Introduction to real time control modelling of collection systems Dates 15 March 24 October	The control module features advanced real time control (RTC) simulation capabilities for collection systems. This one-day, hands-on course aims at providing a basic overview of the RTC simulation capabilities as well as enabling the participant to set up a controlled system and analysing the results.	<ul style="list-style-type: none"> Setting up a controlled system in MIKE URBAN Logical conditions and control actions PID control Controllable devices Simulations, viewing of selected results during simulation and result analysis
	MIKE URBAN WD Introduction to modelling of water distribution systems Dates 23-24 February 20-21 September	This two-day, hands-on course provides practical introduction to modelling of hydraulics and water quality in water distribution systems. You will learn how to set up and run MIKE URBAN WD and turn model outputs into professional presentation material. The course aims at enabling the participants to perform the basic functions of MIKE URBAN WD.	<ul style="list-style-type: none"> Project setup, including units, coordinate system Data organisation, import/export of external data Numerical and graphical editing and quality control Simulation of hydraulics and water quality Result analysis and visualisation
	WEST Introduction to modelling of wastewater treatment plants Dates 1-2 May	The two-day, hands-on course provides professionals with an overview of the aspects to be addressed when working with modelling biological wastewater treatment plants. You will learn how to set up a project in WEST, conduct a dynamic simulation, as well as set up and execute advanced experiments (such as Uncertainty Analysis or Parameter Estimation).	<ul style="list-style-type: none"> The WEST GUI Project setup (plant layout) Dynamic simulation Result analysis and visualisation Objective evaluation Advanced experiment types
	WEST Advanced modelling of wastewater treatment plants Dates 3 May	This one-day, hands-on advanced WEST course provides modellers and professional with a good understanding of the WEST model library. You will learn how to customise the WEST model library by adding new models.	<ul style="list-style-type: none"> The WEST Model Library The Model- and Block Editor tools The MSL programming language
FLOODING	MIKE FLOOD (River) Integrated 1D and 2D river flood modelling Dates 17-18 April 04-05 September	In this two-day, hands-on course you will learn how to model integrated river and flood plain dynamics using MIKE FLOOD. Focus will be on defining efficient coupled 1D (MIKE 11) and 2D (MIKE 21) models with emphasis on data requirements, optimal model schematisation and model stability.	<ul style="list-style-type: none"> Building a bathymetry Coupling MIKE 11 and MIKE 21 Topographic data handling Fine scale structures in coarse grids Floodplain modelling and mapping Results viewing and presentation
	MIKE FLOOD (Urban) Integrated 1D and 2D urban flood modelling Dates 29 Feb-01 March 09-10 October	In this two-day, hands-on course you will learn how to develop a 2D overland flow model by coupling the 1D urban drainage model (MIKE URBAN) and the 2D overland flow model (MIKE 21) to simulate the fully integrated flow dynamics between sewage/storm water systems and surface areas.	<ul style="list-style-type: none"> Building urban bathymetries Coupling MIKE URBAN CS and MIKE 21 Coupling 1D and 2D models with the MIKE URBAN 2D Overland Flow feature Using GIS for model preparation and results
	MIKE FLOOD (3-way) Integrated pipes, channels and surface modelling Dates 16-18 October	This three-day course aims at enabling you to develop a 2D overland flow model and to couple a 1D river model (MIKE 11), a 1D urban model (MIKE URBAN) and a 2D overland flow model (MIKE 21). All aspects of flow interactions are taken into account: pipe network/surface, surface/open channels, open channels/pipe network.	<ul style="list-style-type: none"> Building urban bathymetries Preparing MIKE URBAN models/MIKE 11 models for coupling with MIKE 21 1D-2D linkage options Stability issues Result viewing and presentation
WATER RESOURCES	MIKE SHE Integrated catchment modelling Dates 06-08 March 25-27 September	MIKE SHE is being used in real projects around the world to solve engineering problems across the fully hydrological spectrum - from detailed wetland studies to basin-wide water resource management studies to real time flood forecasting. In this three-day, hands-on intensive course you will learn about the processes and linkages in integrated catchment modelling using MIKE SHE.	<ul style="list-style-type: none"> Channel flow Overland flow and infiltration Unsaturated/saturated groundwater flow Hydrological coupling Calibration of integrated models Integrated water budgets Integrated water quality modelling
	MIKE 11 Introduction to river and channel modelling Dates 20-21 March 28-29 August	This two-day, hands-on course gives an introduction to 1D river modelling with MIKE 11. The aim is to go through the basic features of MIKE 11 to enable you to set up and run simple river models and to evaluate their results.	<ul style="list-style-type: none"> MIKE 11 modular structure MIKE 11 graphical user interface (GUI) Schematisation and application of simple river models Modelling basic hydraulic structures
	MIKE 11 GIS GIS based model development Dates 22 March 30 August	In this one-day, hands-on course you will be introduced to the MIKE 11 GIS interface - an ArcGIS extension that provides a range of efficient tools and features primarily for utilising GIS in the schematisation and preparation of MIKE 11 river model input files. MIKE 11 GIS is also used for result viewing and postprocessing.	<ul style="list-style-type: none"> Schematisation of river model features in ArcGIS Extraction of topographic data from DEM Importing existing river model data Exporting model input files Result viewing and analysis

WATER RESOURCES	<p>MIKE 11 ECO Lab 1D water quality and ecological modelling</p> <p>Dates 27-28 June 27-28 November</p>	<p>This three-day, hands-on course teaches the fundamentals of ecological modelling and gives you an introduction to how to develop your own ecosystem models using the ECO Lab equation solver framework and integrate this into MIKE 11. Examples applied for water quality are examined.</p>	<ul style="list-style-type: none"> Fundamentals of ecological modelling Dialogue overview MIKE 11 ECO Lab ECO Lab templates MIKE 11 ECO Lab setup and execution Calibration and validation procedures Interpretation of results
	<p>MIKE 11 Advanced 1D hydrodynamic modelling</p> <p>Dates 24-25 April 29-30 August</p>	<p>This two-day, hands-on course is an extension to the introductory course. It aims at giving you a thorough insight into modelling more complex river, canal and reservoir systems, including hydraulic structures and coupling to rainfall-runoff models.</p>	<ul style="list-style-type: none"> Setup reliable MIKE 11 models Applying static and operational structures Model calibration Coupling HD and RR models
	<p>MIKE BASIN Introduction to river basin modelling</p> <p>Dates 31 October-01 November</p>	<p>This two-day, hands-on MIKE BASIN overview course aims at familiarising you with the MIKE BASIN concept. It will illustrate how you will be able to operate the software efficiently and create models for water allocation and reservoir operation projects.</p>	<ul style="list-style-type: none"> Introduction to MIKE BASIN Introduction to GIS and model design Creating models for water allocation projects Reservoir and hydropower modelling Result presentation and analysis
	<p>MIKE BASIN Macro programming and optimisation</p> <p>Dates 2 November</p>	<p>This one-day, hands-on course teaches the use of macro programming in MIKE BASIN in order to create user specific rules as well as postprocessing of the results directly in Excel. Moreover, this allows the user to perform optimisation by use of external libraries (eg Excel).</p>	<ul style="list-style-type: none"> Macro programming VBA Creating user specific rules Postprocessing of the results Optimisation Application of optimisation in MIKE BASIN
	<p>MIKE BASIN Water quality modelling</p> <p>Dates 07-08 November</p>	<p>This three-day, hands-on course aims at familiarising the participants with MIKE BASIN and its WQ Module in order to be able to operate the software efficiently and create models for nonpoint and point pollution load assessments and simple water quality modelling in rivers.</p>	<ul style="list-style-type: none"> Overview of MIKE BASIN modelling system Introduction to GIS and model design Nonpoint load assessment River water quality modelling Result presentation and analysis
GROUNDWATER & POROUS MEDIA	<p>FEFLOW Introduction to groundwater modelling</p> <p>Dates 14-16 May</p>	<p>This three-day, hands-on course provides you with an introduction to groundwater modelling using FEFLOW. On the basis of a case study you build a 3D flow and transport model applying the most important programme functions, including preprocessing, simulation and result evaluation.</p>	<ul style="list-style-type: none"> FEFLOW and its graphical user interface Creating 2D and 3D mesh geometries Setting up flow models with confined and unconfined aquifers Setting up transport models Steady-state and transient models Usage of GIS/CAD data interfaces
COAST & SEA	<p>MIKE 21 HD Hydrodynamic modelling using 'classic' grid</p> <p>Dates 01-02 February 04-05 September</p>	<p>This two-day, hands-on course provides a practical introduction to the basics of flow modelling and how to get started with 2D models. The course aims at enabling you to set up and run flow simulations with MIKE 21 HD and MIKE 21 NHD 'classic' versions.</p>	<ul style="list-style-type: none"> Selection of geographical coordinate system and bathymetry digitisation (grid) Data import, editing and quality control Setting up 2D hydrodynamic models Managing boundary conditions Calibration and validation
	<p>MIKE 3 HD Hydrodynamic modelling using 'classic' grid</p> <p>Dates 07-08 February 06-07 September</p>	<p>This two-day, hands-on course provides a practical introduction to the basics of flow modelling and how to get started with 3D models. The course aims at enabling you to set up and run flow simulations with MIKE 3 HD and MIKE 3 NHD 'classic' versions.</p>	<ul style="list-style-type: none"> Selection of geographical coordinate system and bathymetry digitisation (grid) Data import, editing and quality control Setting up 3D hydrodynamic models Managing boundary conditions Calibration and validation
	<p>MIKE 21 BW Wave disturbance modelling in ports</p> <p>Dates 07-08 February 04-05 October</p>	<p>This two-day, hands-on course provides a practical introduction to wave disturbance modelling in ports and by structures using the MIKE 21 Boussinesq wave model. The course will help you predict and analyse wave conditions in ports and behind structures where accurate assessment of wave impact is of utmost importance.</p>	<ul style="list-style-type: none"> Application of MIKE 21 BW How to set up models based on rectilinear grid Creating porosity and sponge layer maps Calibration techniques and model validation Interpretation of results
	<p>MIKE 21 & MIKE 3 FLOW MODEL FM Hydrodynamic modelling using flexible mesh</p> <p>Dates 07-08 March 12-13 September</p>	<p>This two-day, hands-on course provides a practical introduction to the basics of flow modelling and how to get started with 2D and 3D models. The course aims at enabling you to set up and run flow simulations with MIKE 21 and MIKE 3 FLOW MODEL FM with the advanced data preparation and editing facilities and to turn model outputs into professional presentation material.</p>	<ul style="list-style-type: none"> Selection of geographical coordinate system and bathymetry digitisation (mesh) Data import, editing and quality control Fundamentals of 2D and 3D flow modelling Setting up simple hydrodynamic models Managing boundary conditions Calibration and validation procedures
	<p>LITPACK Modelling longshore sediment transport and coastline evolution</p> <p>Dates 22-23 May 02-03 October</p>	<p>This two-day, hands-on course provides a practical introduction to the use of 1D modelling of longshore sediment transport and coastline evolution along quasi-uniform coastlines. The course aims at enabling the you to set up and run simulations using LITDRIFT and LITLINE as well as Littoral Processes FM.</p>	<ul style="list-style-type: none"> Basic assumptions in the 1D modelling setup Concept of morphological baseline Setting up LITDRIFT, LITLINE and Littoral Processes FM models Interpretation of results and calibration Result viewing and presentation
	<p>MIKE 21 & MIKE 3 ECO Lab 2D and 3D water quality and ecological modelling</p> <p>Dates 14-15 June 21-23 November</p>	<p>This three-day, hands-on course provides a practical introduction to the fundamentals of ecological modelling. You will learn how to develop your own ecosystem models using the ECO Lab editor and integrate this into a MIKE 21/3 ECO Lab model to obtain accurate spatial predictions of aquatic ecosystem response.</p>	<ul style="list-style-type: none"> Fundamentals of ecological modelling Introduction to existing ECO Lab templates How to set up the MIKE 21/3 ECO Lab FM model Model calibration and validation Interpretation of results
	<p>MIKE 21 SW Spectral wave modelling</p> <p>Dates 26-27 June 11-12 October</p>	<p>This two-day, hands-on-day course provides a practical introduction to wave modelling using the MIKE 21 Spectral Wave model. The course will help you predict and analyse wave climates in offshore and coastal areas.</p>	<ul style="list-style-type: none"> Application of MIKE 21 SW How to set up models based on flexible mesh (unstructured grid) Decision of spectral formulation Calibration techniques and model validation Interpretation of results



User Group Meeting and Workshops

ANNUAL USER GROUP MEETING

Time: Tuesday 12 June - Wednesday 13 June

Place: Rungstedgaard, Rungsted, Denmark

Price: Free of charge

The User Group Meeting will include a mixture of presentations of the new software features of Release 2012 as well as case studies presented by DK users and DHI experts.

On the following day, 13 June, specialised seminars will be organised in parallel tracks covering Water Resources, Cities Coast & Sea and Groundwater. One track with focus on 'Agent Based Models (ABM) with ECO Lab', which is supported with the upcoming Release 2012. A unique opportunity to discuss questions with DHI experts and network with other MIKE by DHI users!

WORKSHOP:

A GUIDE TO FUNCTIONALITIES IN MESH GENERATOR

Time: Tuesday 11 September, 13:00 - 16:00 hrs

Place: DHI Head Office, Hørsholm, Denmark

Price: Free of charge

Language: English

The Mesh Generator provides the tool for creating a flexible mesh bathymetry that are used as the bathymetric basis in the DHI MIKE 21 & MIKE 3 FM model complex. During this three-hour, afternoon workshop you will learn about most of the functionalities available within the Mesh Generator for creating and/or modifying a mesh bathymetry. On the basis of a number of cases the optimal choice of model domain and resolution of the mesh will be discussed.

The workshop is intended for current and potential users of the MIKE 21 and MIKE 3 FM modelling complex.

The training course 'MIKE 21/3 FLOW MODEL FM-Hydrodynamic modelling using flexible mesh' is arranged in continuation of the workshop (12-13 September). The training will be in English. Particularly clients who are interested in how to set up a hydrodynamic model using the MIKE 21/3 HD FM model (using flexible mesh bathymetry) will benefit from the training.



WORKSHOP:

AGENT BASED MODELS (ABM) WITH ECO Lab

Time: Wednesday 13 June & Tuesday 20 November, 13:00 - 16:00 hrs

Place: DHI Head Office, Hørsholm, Denmark

Price: Free of charge

Language: English

Agent based models (ABM) describe the autonomic behaviour and states of agents, objects or individuals. These models allow to address questions that are beyond the scope of traditional water quality models. Therefore, such agent based models have received much attention in recent years. DHI supports ABM modelling with the upcoming Release 2012. In this three-hour, afternoon workshop you will receive a short introduction to agent based models and how to set up simple agent based models (ABM) and how to set up simple agent based models in the MIKE 21 FM modelling complex using ECO Lab. The workshop is intended for professionals in environmental engineering and management working with shallow inland lakes or coastal areas. You should have a background in applied water quality aspects and/or biology. It is an advantage if you have knowledge of the MIKE 21 and MIKE 3 FM modelling complex.

The training course 'MIKE 21 & MIKE 3 ECO Lab - 2D and 3D water quality and ecological modelling' is arranged in continuation of the workshops (14-15 June & 21-23 November).

MIKE by DHI SaaS Portal

software as a service

MIKE by DHI Software as A Service

As a MIKE user with valid Service and Maintenance Agreement you can now get access to additional licences - and hardware - within minutes and without making any investment. You do it through the new MIKE by DHI SaaS Portal.

The MIKE by DHI SaaS Portal enables preapproved users to select:

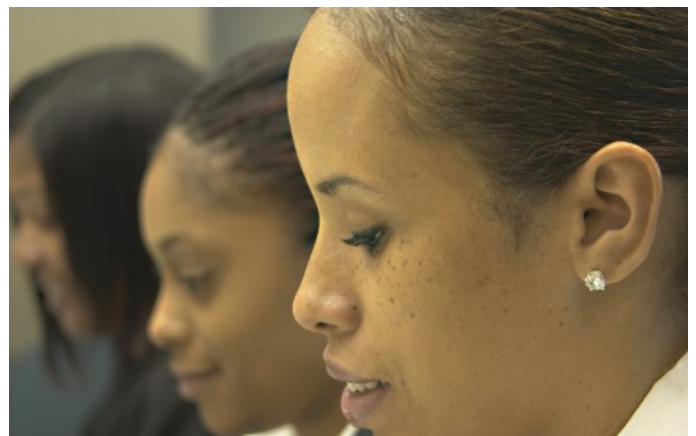
- a hardware platform (PC configuration)
- a MIKE by DHI software configuration

Based on your selection, a price per hour is calculated. If you accept this price the selected combination becomes available for remote login a few minutes later. Both hardware and payment system are provided by Amazon. Hence, you need a credit card to use the SaaS Portal.

Responsibilities, warranties, etc are similar to the licence purchase model.

First time users of the SaaS Portal need to be approved by Amazon and by DHI

The 'Getting Started Guide' helps you through the steps in this process. Once you have been approved you can rent as many PCs 'in the cloud' as you want - equipped with the MIKE by DHI software you need.

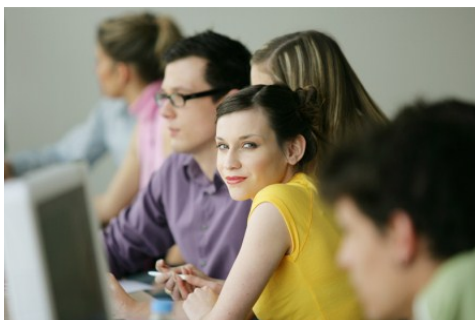


**Ask for more information about the new MIKE by DHI SaaS portal
at your next training course**

<https://saas.dhigroup.com>

DHI Worldwide

Australia
Brazil
Bulgaria
Canada
China
Czech Republic
Denmark
France
Germany
Greece
India
Italy
Japan
Malaysia
New Zealand
Norway
Poland
Portugal
Romania
Singapore
Slovak Republic
South Africa
Spain
Sweden
Thailand
Turkey
Vietnam
UK
United Arab Emirates
USA



MIKE
BY DHI

DHI is a world leader within software for the simulation of water and environmental issues. MIKE by DHI is the brand name covering all our software products, which we sell directly from Denmark and through DHI offices in more than 30 countries.

The MIKE products help thousands of users develop better local solutions to global problems such as adaptation to climate change, flooding, water scarcity, design of renewable energy systems, safe and healthy water supply and sanitation.

Excellent tools turn the hardest job into a joy! However, even the best tools may reach their limit, and that is precisely when you find out what you have paid for!

With MIKE Software you have not just purchased a tool - you have stepped into a unique technical support system with local support in more parts of the world than any similar product family.

Every year thousands of users - experienced, new and potential - attend our software courses and our regional and national software conferences, user group meetings and round-tables worldwide. Our events offer an excellent opportunity to exchange experiences and ideas with fellow users and colleagues in an informal spirit - and you are learning at the same time!

More than just software! Make a real difference - join the MIKE family!

Further information

Consult our global Course Calendar. It always tells you when, where and which MIKE courses are offered worldwide:

www.mikebydhi.com/training/globalcoursecalendar

Detailed course descriptions, fees and registration forms

Please contact:

Loni Skov Madsen, Course Coordinator
MIKE by DHI Customer Care, Denmark
mikebydhi@dhigroup.com

DHI

DHI Head Office

Agern Allé 5
DK-2970 Hørsholm
Denmark

Tel: +45 4516 9200
Fax: +45 4519 9292

dhi@dhigroup.com
www.dhigroup.com
www.mikebydhi.com